

THE SENSE DELUXE HOTEL

SUSTAINABILITY REPORT

2022-2023





emir
hotels

SUSTAINABILITY REPORT 2022-2023

ABOUT THE
REPORT

EMIR HOTELS

- TUI BLUE Xanthe
- TUI BLUE Side
- The Sense De Luxe
- Emir Sport
- Bubble Laundry

- Environmental Policy
- Social Responsibility Policy
- Quality Policy
- Child Rights Policy
- Human Resources Policy
- Occupational Health and Safety Policy

- Consumption of Resources
- Energy
- Water and Waste Water
- Waste and Hazardous Materials
- Working Life
- Social Works
- Communication with Local Community



emir
hotels

As Emir Hotels, we communicate our sustainability efforts, developments and the results of our efforts so far to our guests, management, employees, suppliers and all other stakeholders, and aim to raise awareness.

Emir Hotels Sustainability Report has been prepared as a requirement of our request to certify our environmental and sustainability efforts and includes the data for the period 2021-2022.

In the future, we want to evaluate the impacts we have created within the scope of sustainability and continue to prepare this report. We analyze and examine the expectations of all our stakeholders from us within the framework of sustainability. We consider this report as an important communication tool in order to develop it together and adopt it as a management style.

We carry out sustainability studies in our enterprises with the coordination of the Quality department. We declare that we are open to the evaluations and suggestions of all our stakeholders and forward our contact information.

Mikail GÜZEL
Quality Manager
gm@emirhotels.com
Tel: +90 242 763 86 00
Gsm: +90 533 954 14 85
TUI BLUE Xanthe (Merkez Ofis)
Evrenseki Mevkii
Side - Antalya - Türkiye
www.emirhotels.com

Serdar AYMAN
Food Engineer
tbkalite@emirhotels.com
Tel: +90 242 763 86 00
Gsm: +90 549 502 21 59
TUI BLUE Xanthe (Merkez Ofis)
Evrenseki Mevkii
Side - Antalya - Türkiye
www.emirhotels.com

Emel YAMAN
Dietitian
sensekalite@emirhotels.com
Tel: +90 242 763 30 90
Gsm: +90 549 502 21 58
The Sense De Luxe Otel
Bingeşik Mevkii
Side - Antalya - Türkiye
www.emirhotels.com



TUI BLUE

Xanthe

The hotel, which was included in Emir Hotels with the title of the region's first 5* hotel in 2004, is the address where sea, sand and sun meet with entertainment for all our guests from 7 to 70, with its large garden, olympic pool, pools with slides and numerous service areas.

TUI BLUE Xanthe 5*, built on an area of 20,000 square meters on the shore of the walking path that stretches for kilometers from the town of Evrenseki to Side, offers an environment and service where everything is considered for a special holiday with children.



243 Rooms, 657
Beds



6 Swimming Pools



4 Bars



4 Restaurants



1 Mini Club



Aquapark, Water
Slides



TUI BLUE XANTHE



TUI BLUE

Side

TUI BLUE Side 5*, the upper segment concept of TUI, the world's leading tour operator, was established on an area of 16.000 square meters on the most beautiful coastline of Evrenseki town with 236 rooms as the flagship of TUI BLUE

hotels in different countries of the world.

TUI BLUE Side, which brought a new breath to the tourism sector in 2009 with a different understanding of service and quality, offers guests aged 18 and over a peaceful opportunity to get away from daily life. Kumköy center, which offers extensive shopping opportunities, is 800 m away, Side with its restaurants, bars and historical port is 7 km, Antalya airport is 60 km away.



236 Rooms, 480 Beds



2 Swimming Pools, 1
Jakuzi



8 Bars



4 Restaurants



TUI BLUE SIDE

The Sense De Luxe 5*, which brings a new breath to Side with a different quality and Deluxe approach and offers a comfortable holiday with its privileged service concept, is built on an area of 38,500 square meters. It opened its doors in 2014 with 374 rooms dominated by innovative design in a region where modern life and rich history are intertwined with a deep blue Mediterranean view with its high location. Kumköy center, which offers extensive shopping opportunities, is 1 km away, Side with its historical port is 4 km, Antalya airport is 70 km away.

THE SENSE DELUXE HOTEL



374 Rooms, 832 Beds



6 Swimming Pools, 1
Jakuzi



5 Bar s



5 Restaurants



1 Mini Club

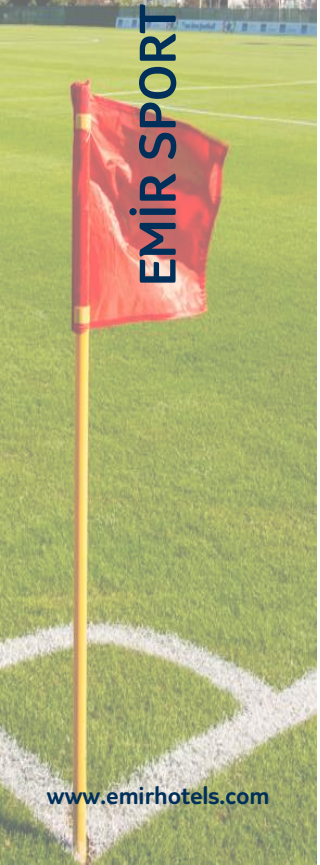


Child Water Slides





Our facility is on its way to be the pioneer of sports tourism, with a fully Olympic heated swimming pool of 1250 m² and a sports complex with 9 football fields on an area of 25.000 m², 800 m from the hotels. We do it within our own organization. We serve an average of 250 football teams throughout the year.



Our Bubble Laundry laundry, which started its operations in 2014 and serves different companies in the region besides our own hotels, is actively involved in the region. Our laundry, located in the sports complex, has become an exemplary establishment with the services it provides. Our laundry has a daily laundry capacity of 12 tons.



bubble
LAUNDRY

BUBBLE LAUNDRY



SUSTAINABILITY APPROACH IN MANAGEMENT

Emir Hotels started its first corporate social responsibility initiatives in 1992 and contributed to education with a wide range of projects across Turkey. As a result of the work done, our founder A. Zeki DEMİRCİ was awarded the outstanding service medal by the Turkish Grand National Assembly. The main goal of our group, which has contributed to many social responsibility projects in Switzerland and Turkey, is to reach a more livable environment and a more conscious society.

We have started our work in our businesses by fulfilling the requirements of the National Environmental Legislations that we are responsible for. Environmental Impact Assessment (EIA) document, Environmental Permit, Live Music Permit, etc. Necessary official permits were obtained, and analysis and follow-up studies were carried out on issues such as waste management, chemical management, waste water and utility water management, and air emissions. Our work continues in order to make the applications permanent.

Since 2013, sustainable environmental management programs such as Travelife, Green Star and ISO 14001 Environmental Management System have been carried out and certified in Emir Hotels group hotels.





emir
hotels

**SUSTAINABILITY APPROACH
IN MANAGEMENT**

Our vision is to be a company that contributes to the development and welfare of societies, and that all individuals and organizations in contact with the sector trust, respect and want to work with while moving forward in harmony with the universal conditions of our age.

In the sector in which we operate; To meet the expectations of our customers and employees at the highest level by being respectful to the individual and society, loyal to the law, economic and moral principles, sensitive to health, safety and the environment,

With the voluntary participation of all our employees for the solid foundations of our future and customer satisfaction,

To maintain efficiency and quality in service,

To protect our competitiveness by reducing service costs,

To continuously improve our quality,

To improve the quality of working life,

Giving importance to the training of our

employees, To follow modern technology,

Paying attention to the protection of the natural environment,

To ensure that all employees are sensitive about quality,

We believe that it will shed light on our 'sustainability' goal and we accept it as our mission.



emir
hotels

SUSTAINABILITY POLICIES

We are proud to be an environmentally friendly hotel. Guided by a sustainable management, we believe in the conservation and development to protect the environment.

We found ourselves constantly:

- Establishing the right environment goals and to include the measurement of the evaluation of the results of our structure in a regular audit process
- All applicable environmental laws, to ensure compliance regulations and implement the current laws and regulations
- Minimize the negative impact to protect our natural resources through a sustainable management and giving education
- Protect and improve the entire ecosystem as good as possible
- Reducing the use of hazardous materials to minimize impurities
- Share our environmental policy to our employees, customers, suppliers, contractors and our local population; to encourage them to do what is necessary to increase the environmental awareness in the same way.
- According to our environmental purchasing policy, we are dedicated to purchase domestic products and services in all possible situations.

We are always our society, our future generations, the development of tourism and for ourselves we aim to create a clean, healthy, safe and sustainable environment.

SOCIAL RESPONSIBILITY POLICY



We recognize how communicating and interacting with society and supporting the people of the region contribute to our goal of ensuring the sustainability of our business.

Part of this is our company, our employees, our guests and society,

By finding solutions to the problems of our region, by supporting the development of the region in many areas such as education, sports, health and culture support, Contribution to the development of the social level of our region,

With the importance we attach to human and children's rights, with the attitude we show against all forms of exploitation and by promoting this attitude reflected in our practice We want to be pioneers by taking care to protect our services and our social and environmental responsibilities towards society, our employees, public / non-governmental organizations and suppliers in all areas in which we operate by taking care to protect local businesses and producers ,and we want to be a pioneering organization that enables our guests to contribute to these values.

QUALITY POLICY



SUSTAINABILITY POLICIES

- Accept the focal point of the guests wishes, expectations, complaints and needs have to be explored, appropriate services should be planned and ensure that quality services are provided,
- While providing products and services appropriate to the principles of food safety, to ensure food safety at all stages until the consumption of the guests and employees, are we moving in accordance with national laws and international standards.
- With a strategic Human Resource Management we provide our Emir Hotels employees conscious regular training for participating in the operation of the structures, to ensure personal development, to bring forward and to enhance competency.
- In order to constantly renew and to adapt to changing conditions; in this direction conduct studies are made for our education.
- Quality should be measurable and results should be linked; for services supplied the continuously improvement of the system should be ensured to identify targets; also we provide the association between employees and the management.
- We protect the environment by preventing pollution that may result from our operations and we are trying to be a model in this area.
- Within the consciousness of occupational health and safety, we aim to provide a safe and healthy environment with all of our stakeholders.



CHILD RIGHTS POLICY

We love children. We accept our responsibility to recognise them as individuals, respect their rights, and protect them against all kinds of psychological, physical etc. abuse.

- Within our own institutions, we do not allow child labour and we expect the same sensitivity from all of our business partners.
- We offer environments and opportunities that support the development of children within the facility, where they can express their wishes and feelings freely and feel comfortable.
- We ensure that children are under the supervision of adults in the activities they participate in.
- We train our entire team on the recognition and prevention of child abuse.
- We make sure that we know detailed information in order to reach their parents or another trusted adult in environments where we entrust children as children's club etc.
- We organise trainings to increase the awareness on the protection of children's rights.

When someone encounter suspicious behaviour related to children, firstly the hotel management inform and ask for help from the Social Support Line when necessary.



emir
hotels

SUSTAINABILITY POLICIES

HUMAN RESOURCES POLICY

- In order to achieve the corporate goals, the Human Resources have set a goal to create a working environment and to ensure continuity. This aims at ensuring that every employee feels responsible and should respect and trust each other.
- The goals of the employees should be realized and the personal development must be identified the training needs. In this direction they have to plan and implement the trainings.
- They have to evaluate proposals and support the implementation on all issues like developing and improving the employees.
- For work applications they have to recognize the equal rights of all applicants; any discrimination in promotion and appointment cannot be made.
- The new employees are introduced with the compliance training, so it can be ensured that they are ready for work.
- Create a safe and healthy work environment.

All rights of the employees in the framework of laws and rules are evaluated and applied.



emir
hotels

SUSTAINABILITY POLICIES

OCCUPATIONAL HEALTH AND SAFETY POLICY

Within the scope of our food and beverage production, presentation and accommodation services;

By adopting the laws and regulations determined by the legislation as minimum standards, identifying the dangers that may cause work accidents and occupational diseases in all our activities, managing the risks, providing safe and healthy environments for our employees, customers and suppliers, It is among the primary duties of all our institutions and employees to organize awareness-raising training and information activities, and to ensure the development and supervision of the occupational health and safety system at all times.





emir
hotels

SUSTAINABLE BUSINESS POLICY

The main objective of our hotel is to provide the best quality with the support of all our staff. All products purchased as part of this goal are evaluated and purchased within the framework stated below.

- We always support local producers and source products from local suppliers whenever possible,
- We introduce local products and traditions to guests,
- We work with companies that have met all legal requirements regarding the environment and energy,
- We work with companies that have environmental and energy policies and support recycling,
- We always give preference to local products over imported products,
- We give preference to products that produce less waste,
- We do not use products that consume outside the A - B energy group unless we are forced to do so,
- We do not use products that contain harmful gases, Competing in the national and international market, we support the continuous development not only of our employees but also of our staff to achieve ever better results.

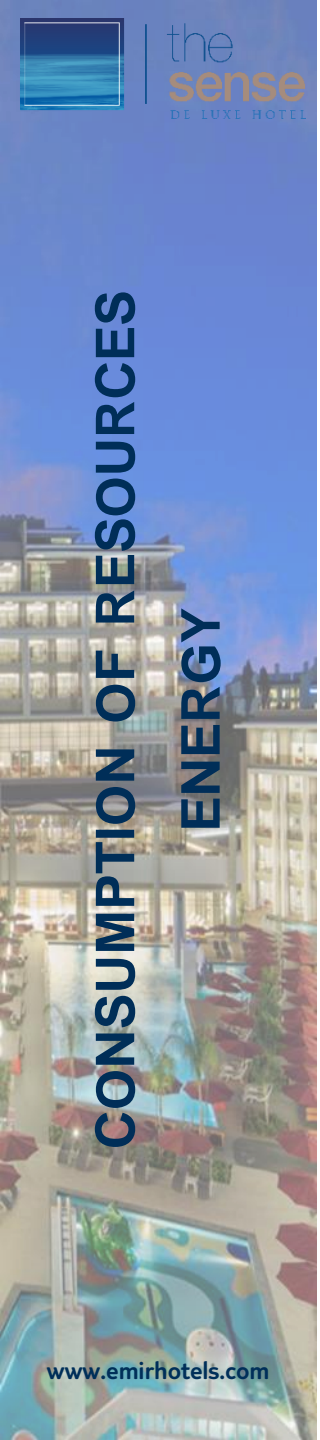
SUSTAINABILITY POLICIES

ENERGY POLICY

Our senior management demonstrates leadership and commitment to continuously improving the effectiveness and energy performance of the EnMS as follows:

We consider our guests as our focal point and provide service without compromising our guest's comfort zone.

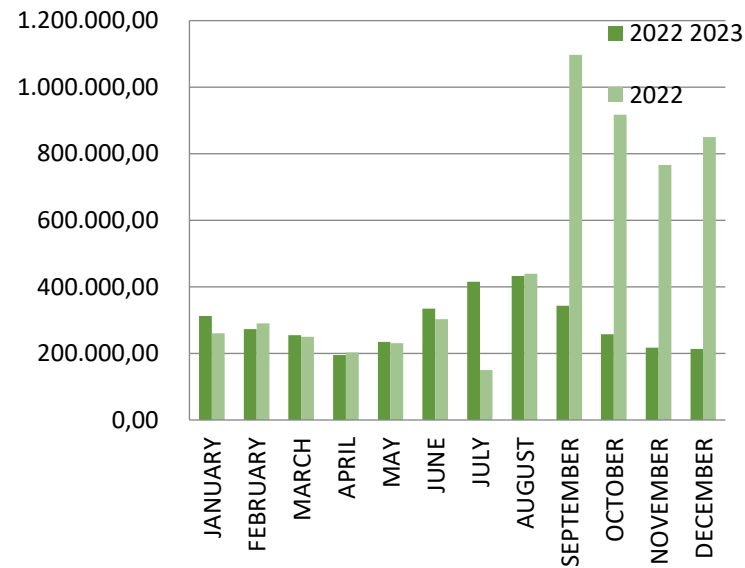
- To provide the necessary resources and information support to achieve our goals and energy targets.
- To comply with legal and other requirements regarding energy efficiency, use and consumption.
- To work on the continuous improvement of energy performance and Energy Management System.
- To provide/support the supply/design of all maintenance and services that affect energy performance.
- To ensure the effective use of natural resources.
- To guide our employees, guests and suppliers on energy efficiency and effective use.



ELECTRICAL DATA

Total Consumption Values (kWh) It is seen that the amount of electricity consumption on the basis of years is in parallel with the occupancy of the hotel guests and reaches the highest values in the seasons.

electricity indexes



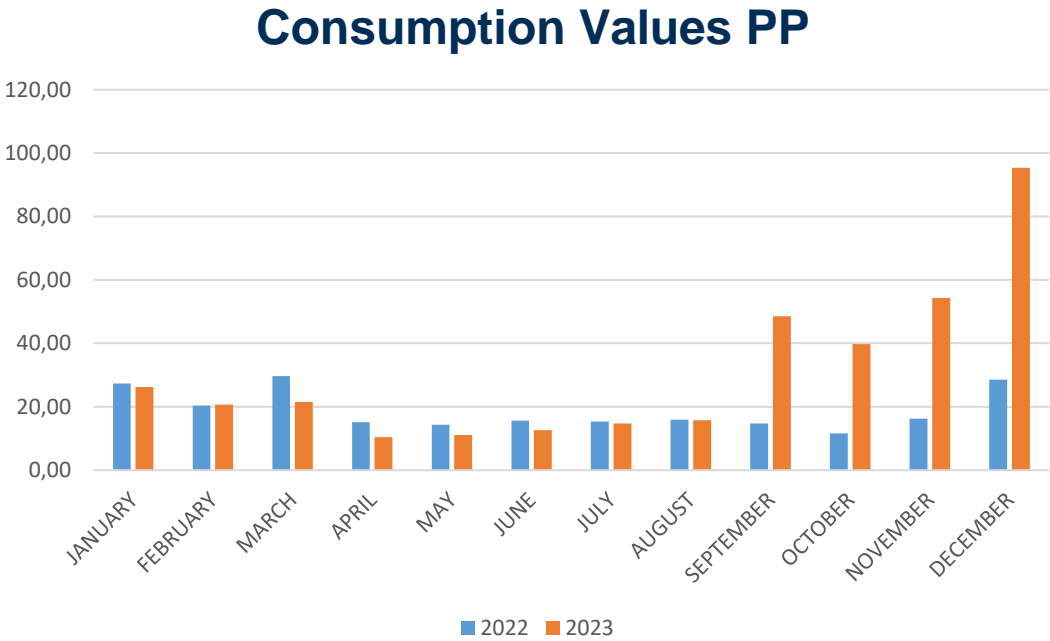
Precautions to be taken in excessive use of electricity;

Control of air conditioners intensified
Lighting opening and closing hours are reviewed
The energy consumption of the powerful appliances used in the kitchen is controlled, and if necessary, maintenance is done / done.
Hotel entrance doors and windows checks are tightened
Some deepfreezes and cold storages in the kitchen are closed depending on the number of guests.
Staff training is intensified.
Controls are carried out with energy audit



ELECTRICAL DATA

Consumption Values PP (kWh)



In 2022, the average electricity consumption per capita is 16.9 kWh. 2023 Electricity consumption per capita is 27.82 kWh. Our 2024 target is 26 kWh. In 2023, temperatures were above seasonal norms.

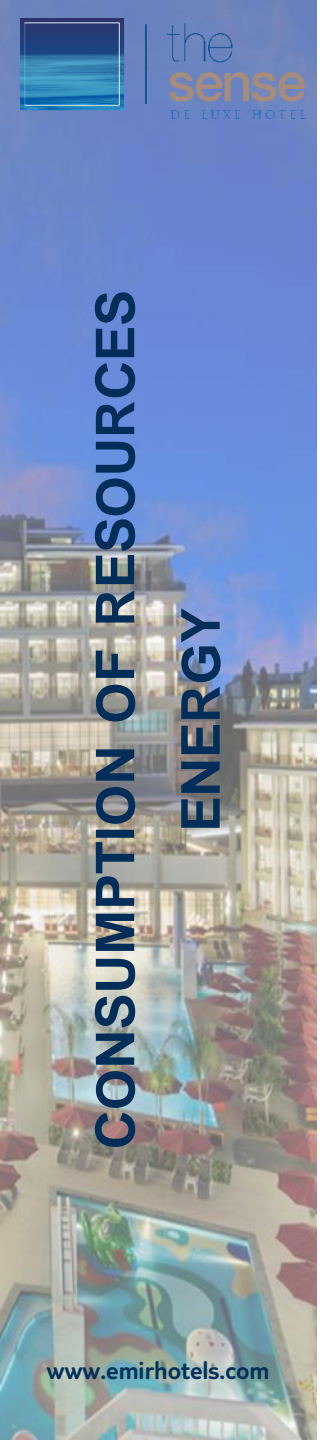
ELECTRICAL DATA

Consumption Values PP (kWh)

(2022-2023)

ELECTRICAL DATA Consumption Values PP (kWh)						
MOUNTH	2022			2023		
	Consumption KW	GUEST ACCOMMODATED	Consumption Values PP (kWh)	Consumption KW	GUEST ACCOMMODATED	Consumption Values PP (kWh)
JANUARY	312.545,52	11443	27,31	260.447,40	9950	26,17561809
FEBRUARY	273.644,28	13437	20,36	290.344,32	14029	20,69600969
MARCH	254.477,16	8597	29,60	250.062,12	11649	21,46640227
APRIL	195.035,40	12882	15,14	202.885,20	19493	10,40810547
MAY	234.975,00	16454	14,28	231.223,00	20945	11,03953211
JUNE	334.380,00	21412	15,62	302.970,00	24096	12,57345618
JULY	415.842,00	27217	15,28	150.404,67	10220	14,71669941
AUGUST	432.562,00	27143	15,94	439.590,00	27938	15,7344835
SEPTEMBER	343.171,08	23283	14,74	1.097.383,14	22599	48,55892473
OCTOBER	257.550,00	22227	11,59	916.826,65	23057	39,76348397
NOVEMBER	217.577,00	13455	16,17	766.655,81	14.116	54,31112284
DECEMBER	214.046,00	7502	28,53	850.369,75	8.918	95,3543115

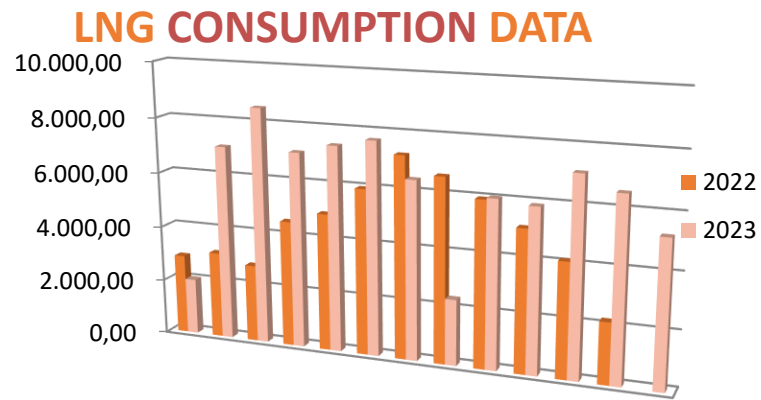
CONSUMPTION OF RESOURCES ENERGY



LNG DATA

Total Consumption Values (kg, kWh) (m³,) (2022-2023)

Precautions to be taken in excess LNG use;
 Kitchen staff warned of useGas detectors and gas leaks are checked.



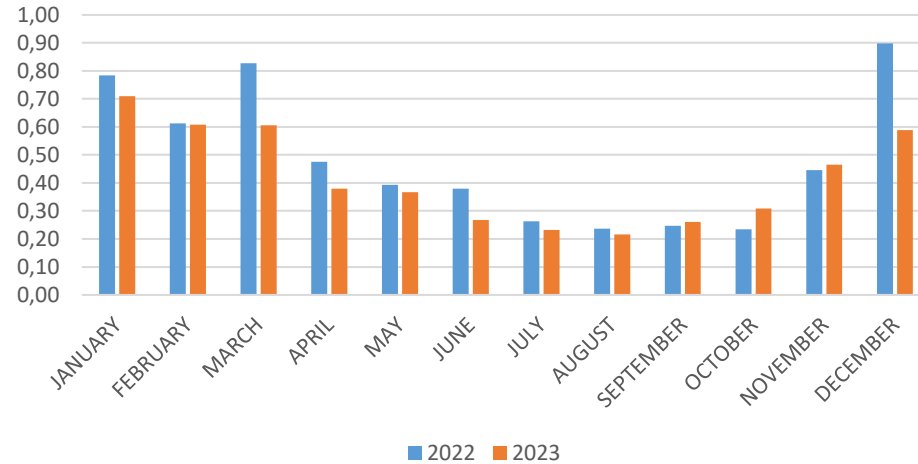
LNG MONTHLY CONSUMPTION M3		
MOUNTH	2022	2023
JANUARY	8.967	7.056
FEBRUARY	8.232	8.529
MARCH	7.105	7.056
APRIL	6.125	7.399
MAY	6.468	7.679
JUNE	8.127	6.435
JULY	7.154	2.376
AUGUST	6.419	6.029
SEPTEMBER	5.733	5.890,00
OCTOBER	5.206	7.106,00
NOVEMBER	5.992	6.563,00
DECEMBER	6.733	5.250,04



LNG DATA

Total Consumption Values (kg, kWh) (m³,) (2022-2023)

LNG MOUNTHLY CONSUMPTION PP M3



LNG MOUNTHLY CONSUMPTION M3						
MOUNTH	2022			2023		
	Consumption KW	GUEST ACCOMMODATED	Consumption Values PP (kWh)	Consumption KW	GUEST ACCOMMODATED	Consumption Values PP (kWh)
JANUARY	8.967	11443	0,78	7.056	9950	0,71
FEBRUARY	8.232	13437	0,61	8.529	14029	0,61
MARCH	7.105	8597	0,83	7.056	11649	0,61
APRIL	6.125	12882	0,48	7.399	19493	0,38
MAY	6.468	16454	0,39	7.679	20945	0,37
JUNE	127.402	21412	5,95	6.435	24096	0,27
JULY	7.154	27217	0,26	2.376	10220	0,23
AUGUST	6.419	27143	0,24	6.029	27938	0,22
SEPTEMBER	5.733	23283	0,25	5.890,00	22599	0,26
OCTOBER	5.206	22227	0,23	7.106,00	23057	0,31
NOVEMBER	5.992	13455	0,45	6.563,00	14.116	0,46
DECEMBER	6.733	7502	0,90	5.250,04	8.918	0,59



2022 LNG consumption per capita averages 0.39 m³ per year. 2023 LNG consumption per capita is 0.37 m³ per year on average. Our 2024 target is 0.36 m³.



emir
hotels

CONSUMPTION OF RESOURCES
WATER AND WASTE WATER

We use mains water in our facility. We have a water treatment system subject to continuous control. The water distributed to every corner of the facility from our water lines has different conditions according to the usage area. Follow-up is carried out with daily monitoring and analyzes twice a month. The water consumption in the system is read by the meters and recorded in the consumption reports.

Waste water generated as a result of use is connected to the ASAT line. The connection is documented with a Quality Control License. Our hotel's drinking and domestic water consumption values also represent waste water values. Waste water costs are paid to ASAT for the same amount of water.



EVEN A DROP IS VALUABLE!
We invite you to save water.

AUCH EIN TROPFEN IST WERTVOLL!
Wir laden Sie ein, Wasser zu sparen.

BİR DAMLASI BİLE DEĞERLİ!
Sizi suyu tasarruflu kullanmaya davet ediyoruz.



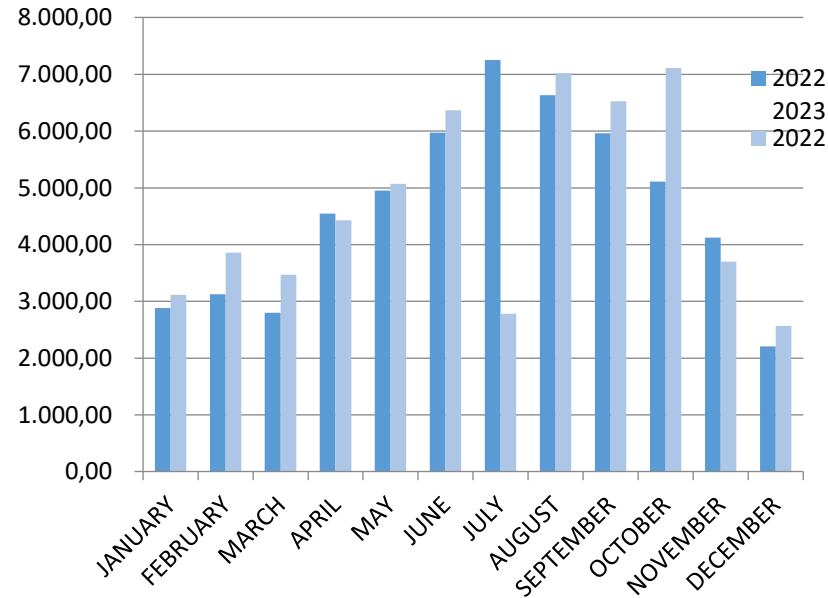
WATER DATA

Total Consumption Values (m³)

It is seen that the amount of water consumption on the basis of years is in parallel with the occupancy of the hotel guests and reaches the highest values in the seasons.

Precautions to be taken in excessive water use;

WATER CONSUMPTION

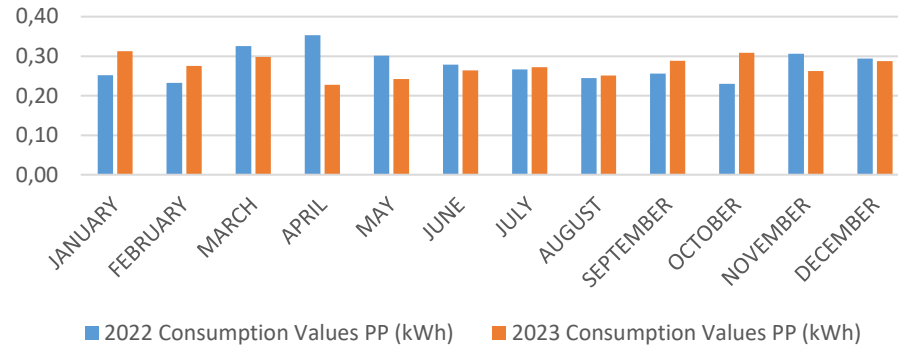


Employee training is intensified
Fault follow-ups are increased
Leakage-leakage controls are tightened, if necessary, maintenance is done / done

WATER DATA

Consumption Values PP (m³) (2022-2023)

WATER CONSUMPTION PP M3



MOUNTH	WATER CONSUMPTION M3					
	2022			2023		
	Consumption KW	GUEST ACCOMMODATED	Consumption Values PP (kWh)	Consumption KW	GUEST ACCOMMODATED	Consumption Values PP (kWh)
JANUARY	2.885,00	11443	0,25	3.114,00	9950	0,31
FEBRUARY	3.123,00	13437	0,23	3.858,00	14029	0,28
MARCH	2.797,00	8597	0,33	3.472,00	11649	0,30
APRIL	4.549,00	12882	0,35	4.430,00	19493	0,23
MAY	4.951,00	16454	0,30	5.073,00	20945	0,24
JUNE	5.970,00	21412	0,28	6.366,00	24096	0,26
JULY	7.252,00	27217	0,27	2.783,00	10220	0,27
AUGUST	6.632,00	27143	0,24	7.022,00	27938	0,25
SEPTEMBER	5.963,00	23283	0,26	6.523,02	22599	0,29
OCTOBER	5.110,00	22227	0,23	7.112,00	23057	0,31
NOVEMBER	4.122,00	13455	0,31	3.698,65	14.116	0,26
DECEMBER	2.205,00	7502	0,29	2.567,32	8.918	0,29



In 2022, the year average per capita water consumption is 0.265 m³. In 2023, the average water consumption per capita is 0.27 m³. Our 2024 target is 0.26 m³.

Year 2022 Recycled Waste Data

PAPER	(kg)	PLASTIC	(kg)	GLASS	(kg)	METAL	(kg)
JANUARY-JUNE	5780	JANUARY-JUNE	2360	JANUARY-JUNE	5140	JANUARY-JUNE	1510
JULY-DECEMBER	9040	JULY-DECEMBER	4230	JULY-DECEMBER	8750	JULY-DECEMBER	2270
TOTAL	14820	TOTAL	6590	TOTAL	13890	TOTAL	3800

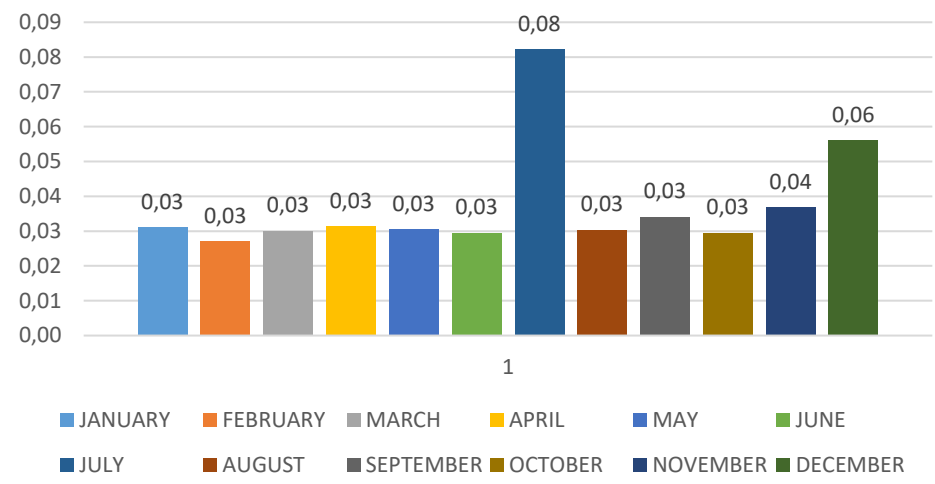
Year 2023 Recycled Waste Data

PAPER	(kg)	PLASTIC	(kg)	GLASS	(kg)	METAL	(kg)
JANUARY	500	JANUARY	310	JANUARY	420	JANUARY	200
FEBRUARY	610	FEBRUARY	380	FEBRUARY	540	FEBRUARY	250
MARCH	680	MARCH	350	MARCH	580	MARCH	240
APRIL	1120	APRIL	610	APRIL	920	APRIL	400
MAY	1240	MAY	640	MAY	1080	MAY	440
JUNE	1320	JUNE	710	JUNE	1350	JUNE	450
JULY	1380	JULY	840	JULY	1510	JULY	430
AUGUST	1280	AUGUST	850	AUGUST	1450	AUGUST	400
SEPTEMBER	1170	SEPTEMBER	770	SEPTEMBER	1290	SEPTEMBER	380
OCTOBER	1010	OCTOBER	680	OCTOBER	1120	OCTOBER	350
NOVEMBER	780	NOVEMBER	520	NOVEMBER	810	NOVEMBER	250
DECEMBER	720	DECEMBER	500	DECEMBER	790	DECEMBER	250
TOTAL	11810	TOTAL	7160	TOTAL	11860	TOTAL	4040

Year 2022 Recycled Waste Data

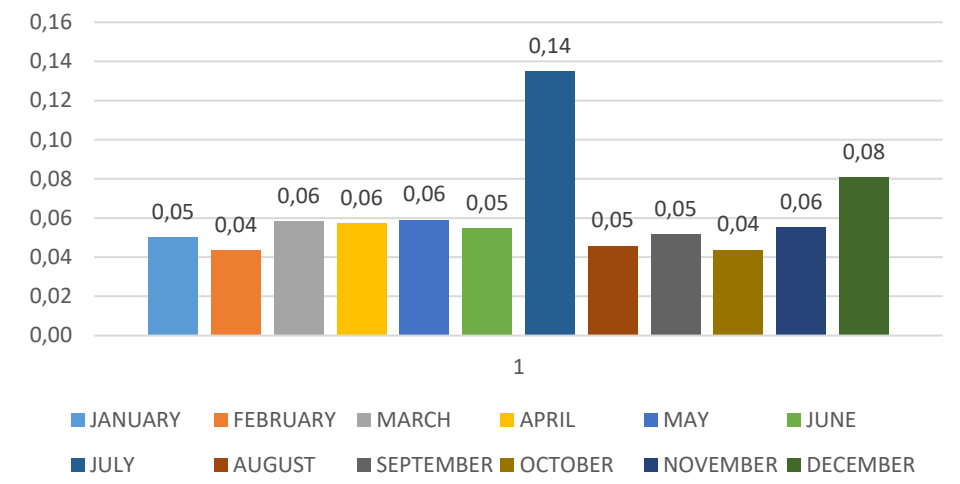
Recycled Paper Waste Data

2022 Kg/PP



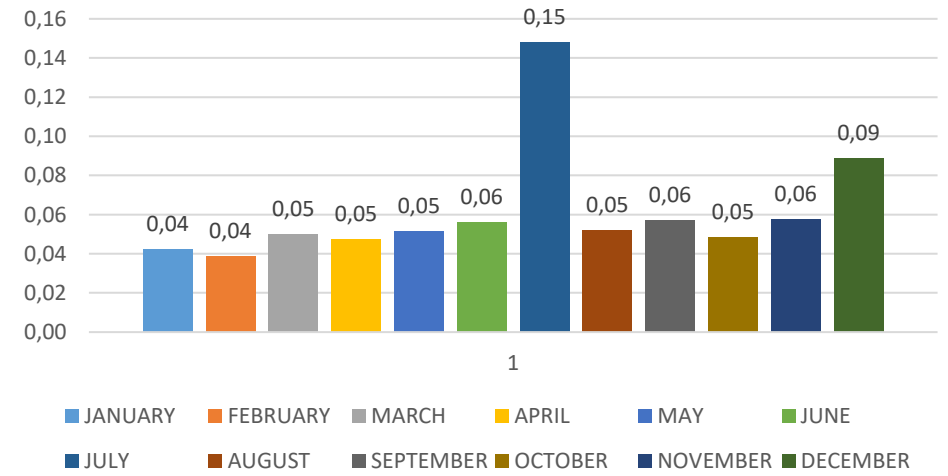
Recycled Plastic Waste Data

2022 Kg/PP



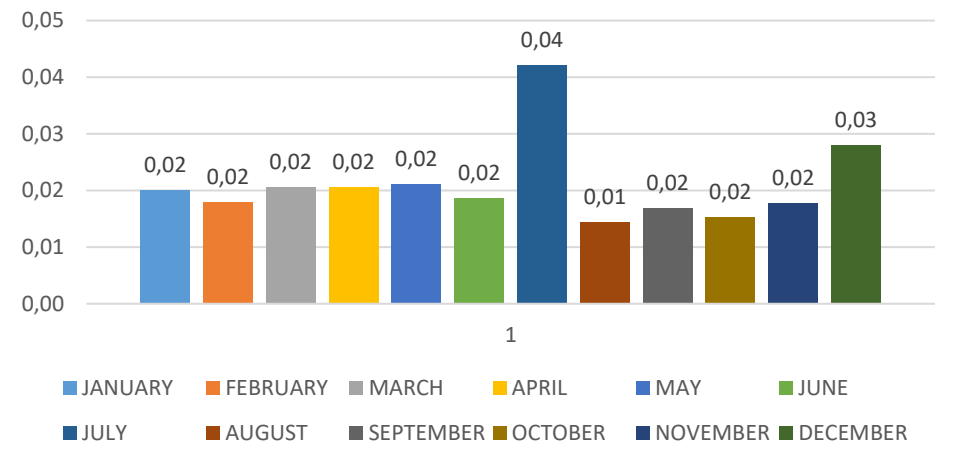
Recycled Glass Waste Data

2022 Kg/PP



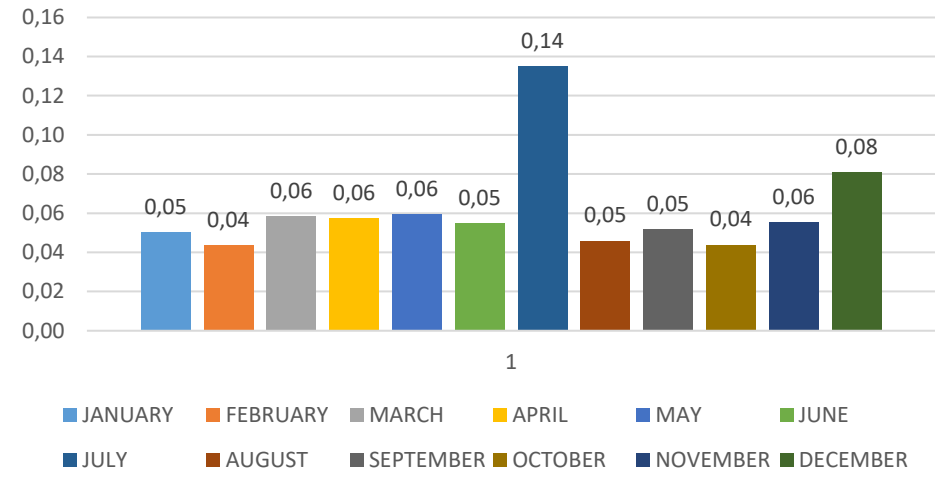
Recycled Metal Waste Data

2022 Kg/PP

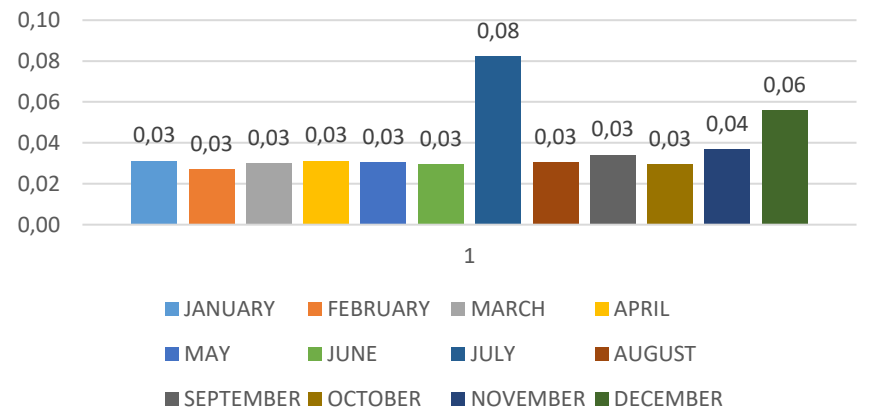


Year 2023 Recycled Waste Data

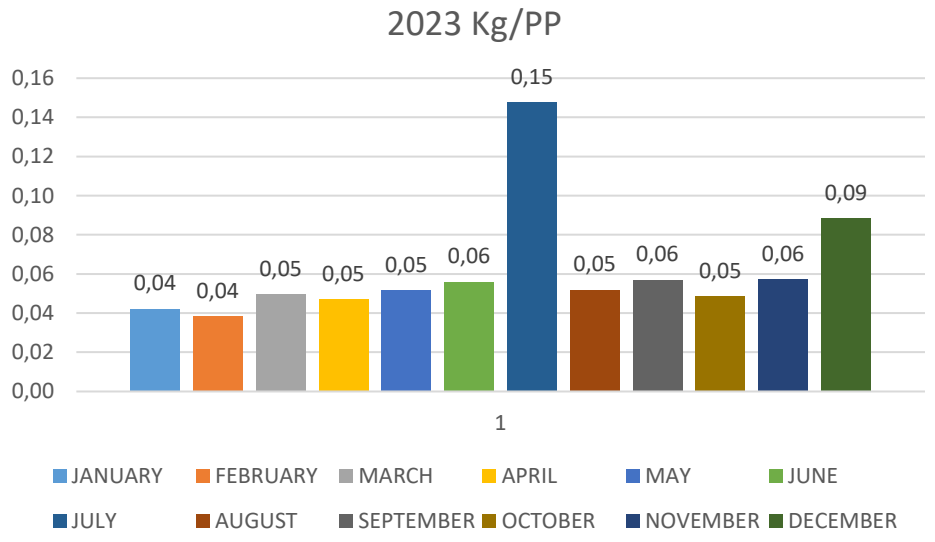
Recycled Paper Waste Data 2023 Kg/PP



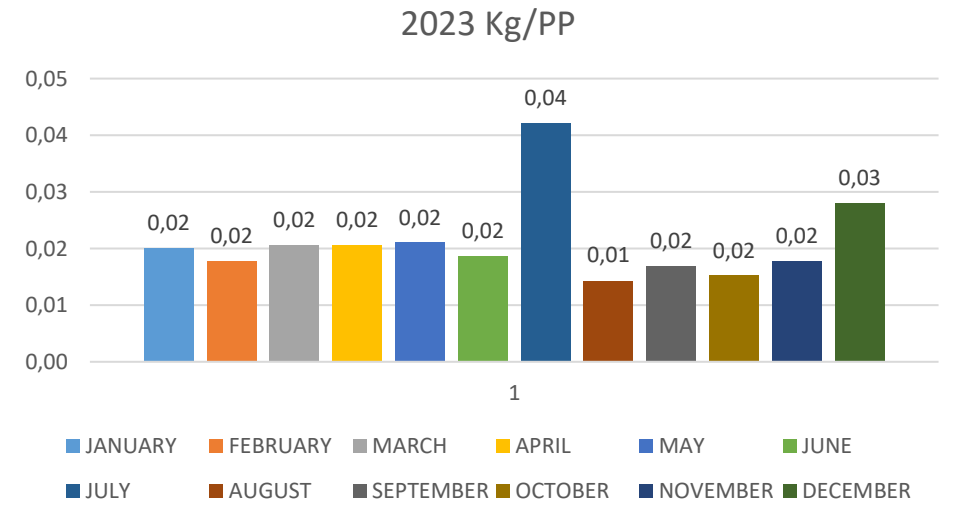
Recycled Plastic Waste Data 2023 Kg/PP



Recycled Glass Waste Data 2023 Kg/PP



Recycled Metal Waste Data 2023 Kg/PP








HAZARDOUS WASTE DATA

It is seen that the highest delivery amounts belong to waste vegetable oils in the amount of hazardous waste delivery for the 2022-2023 period, followed by waste paint-varnish, contaminated packaging and discarded electronic waste.

With the increasing awareness and efficiency of separation within the facility, high tonnage waste is delivered. This situation is followed as an indicator of the development of the system.

Waste Code	Atık Adı	2022 (kg)	2023 (kg)
200126	Oils and fats	1225	4240
180103	Wastes whose collection and disposal are subject to special treatment in order to prevent infection	16	42
200135	Discarded electrical and electronic equipment	60	0
150111	Waste print toners containing hazardous materials	10	25
150110	Packaging containing residues of dangerous goods or contaminated with dangerous substances	40	190
200121	Fluorescent lamps and other mercury-containing waste	35	40
80111	Waste paints and varnishes containing organic solvents or other hazardous substances	30	0
130208	Other engine, transmission and lubricating oils	0	0
180101	Cutters	2	3

By ensuring the recycling and disposal of our waste generated throughout 2022 the gains we have created within the scope of resources;



PAPER 14820 kg	TREE (Piece)  252,04	STORAGE AREA (m³)  37,05	ENERGY-SAVING (kWh)  60737,70	WATER-SAVING (m³)  415,13	GREENHOUSE GAS (kg)  2623,01
--------------------------	--	--	---	---	--

PLASTIC 6590 kg	OIL (lt)  17206,27	STORAGE AREA (m³)  16,48	ENERGY-SAVING (kWh)  38092,49	GREENHOUSE GAS (kg)  270,19
---------------------------	--	--	---	---

GLASS 13890 kg	RAW MATERIALS (ton)  14,234	STORAGE AREA (m³)  17,795	ENERGY-SAVING (kWh)  583,37	GREENHOUSE GAS (kg)  355,84
--------------------------	---	---	---	---

METAL 3800 kg	HAMMADDE (ton)  5,24	STORAGE AREA (m³)  12,12	ENERGY-SAVING (kWh)  2593,063	GREENHOUSE GAS (kg)  383,67
-------------------------	--	--	---	---






WASTE VEGETABLE OIL 3420 kg	BIODIESEL (lt)  3420
---------------------------------------	--

WASTE BATTERY 37 kg	LOAM (m³)  8222,22	STORAGE AREA (m³)  0,087
-------------------------------	--	--



2022 GAINS


By ensuring the recycling and disposal of our waste generated throughout 2023 the gains we have created within the scope of resources;

PAPER 11810 kg	TREE (Piece)  200,85	STORAGE AREA (m³)  29,525	ENERGY-SAVING (kWh)  48401,078	WATER-SAVING (m³)  330,816	GREENHOUSE GAS (kg)  2090,27
--------------------------	--	---	--	--	--

PLASTIC 7160 kg	PETROL (lt)  18.695	STORAGE AREA (m³)  17,9	ENERGY-SAVING (kWh)  41387,29	GREENHOUSE GAS (kg)  293,56
---------------------------	---	---	---	---

GLASS 11860 kg	RAW MATERIALS (ton)  16,67	STORAGE AREA (m³)  20,84	ENERGY-SAVING (kWh)  583,37	GREENHOUSE GAS (kg)  416,74
--------------------------	--	--	---	---

METAL 4040 kg	RAW MATERIALS (ton)  4,93	STORAGE AREA (m³)  11,4	ENERGY-SAVING (kWh)  2439,02	GREENHOUSE GAS (kg)  360,87
-------------------------	---	---	--	---

WASTE VEGETABLE OIL 4240 kg	BIODIESEL (lt)  4240
---------------------------------------	--

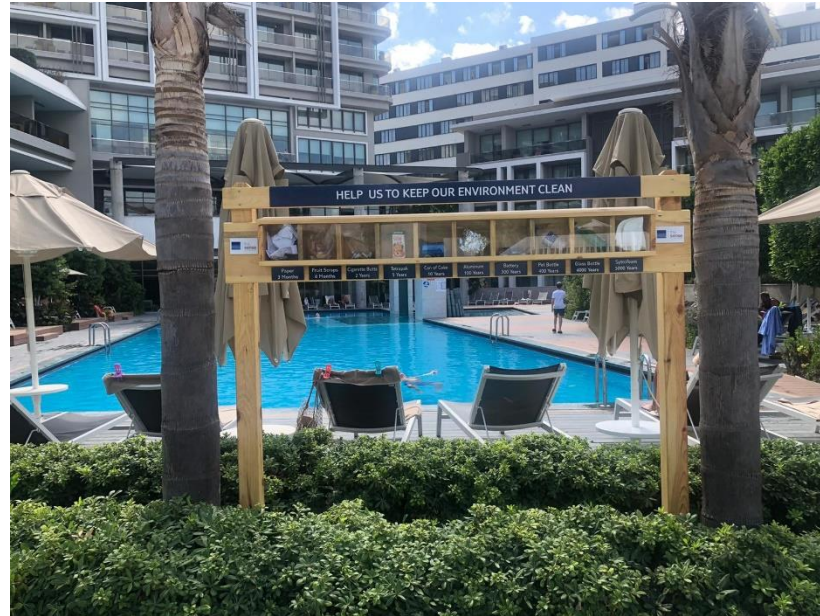
WASTE BATTERY 45 kg	LOAM(m³)  10.000	STORAGE AREA (m³)  0,1058
-------------------------------	--	---



2023 GAINS

Our Sustainable Environmental Management Practices

In order to raise awareness for our guests and employees, we show the extinction times of the wastes we leave behind in nature with examples. We invite both our employees and guests to separate all recyclable wastes, we support you by providing the necessary facilities.





emir
hotels

Our Sustainable Environmental Management Practices

We announced to our employees and regional workplaces;

Instead of throwing away the batteries and frying oil that will no longer be used at home, we invited them to deliver them to us.
In this context, both our employees and regional workplaces deliver waste batteries and waste frying oil to licensed companies for disposal or recycling without harming the environment.



Our Sustainable Environmental Management Practices

- On the 2nd Thursday of every month, with the guidance of our consultant with expert international experience and our Board of Directors member, Mr. Our sustainability committee holds our meetings under the leadership of Gizem DEMİRCİ. We plan new projects with the experiences we have gained from the projects we have realized by making monthly targets and evaluations.
- We donate to the TEMA foundation.
- We organize cleaning activities around the hotel with our employees at regular intervals in order to reduce the damage to nature and raise awareness. Doğaya verilen zararı azaltıp bilinçlendirme amacıyla çalışanlarımızla belirli aralıklarla otel çevresini temizleme etkinlikleri düzenliyoruz
- In order to encourage our guests to prevent food waste, the daily amount of waste food and how many people's nutritional needs can be met with it are shared at the entrance of the restaurant.





emir
hotels

Our Sustainable Environmental Management Practices.

- We carry out guest information and special day celebrations interactively on television.
- We use QR code surveys instead of printed satisfaction surveys in guest rooms..
- We produce our own olives in the hotel and in the staff lodging and give them to the guests staying during the festival in small souvenir bottles.
- Spices grown in the gardens of our hotels, as much as hobby gardens, and lemons grown in our gardens are used in the kitchen.
- Grass that requires little irrigation and spreads spontaneously is used in grass areas.
- We use paper straws instead of plastic straws. In order to reduce the use of straws, we do not place straws on the bar desks and provide them to our guests upon request.



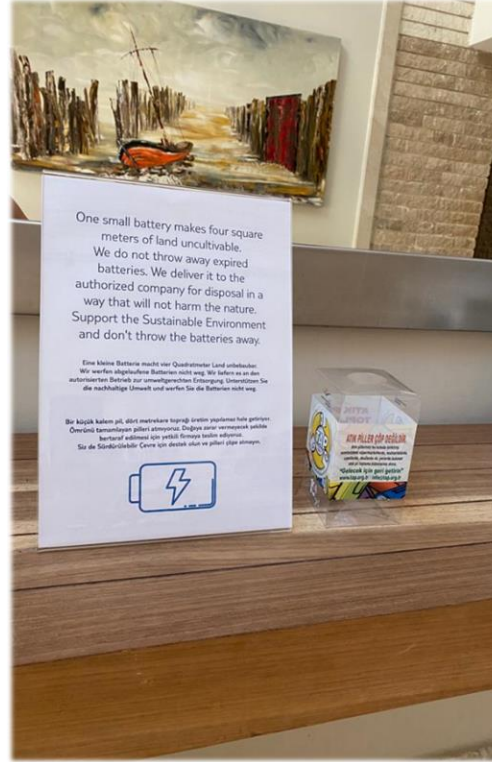
Our Sustainable Environmental Management Practices.

- In all restaurants and bars, paper straws, plates, stirrers and glasses are used instead of disposable cups, plates, stirrers and straws.
- By changing shower heads and tap aerators, the amount of water consumed per minute was reduced from 12 liters to 7 liters.
- There is a heat recovery device in the entire ambient ventilation system to minimize energy consumption.
- The most efficient of the devices There is a frequency control device to ensure that it operates in economical and economical mode, but employees must be made aware and trained about its use.
- Zero water lines are used in tea boilers instead of bottled water.
- In order to reduce the plastics used on our pier, treatment has been installed in the mains water and postmix-premix devices have started to be used instead of plastic packaged drinks.

Our Sustainable Environmental Management Practices.

- Bicycle rental and directing guests to public transportation.
- Purification devices in restaurants and bars. The water obtained is used.
- Min. Energy-consuming lighting lamps are used.
- Water is heated with solar energy panels.
- We have an automation system in all areas.
- We use Cloth bags instead of Laundry Bags. .
- The mini-bar is not in a closed cabinet, there is an air outlet.
- During the cleaning of guest rooms, natural ventilation is provided by opening a glass window with the air conditioner turned off.
- Entrance doors should be opened with a button, not a photocell.
- Hazardous wastes, non-hazardous packaging wastes, scraps, textiles, etc. All recyclable wastes are disposed of and recycled in accordance with official legislation under the control of an Environmental Engineer.
- Energy loss is prevented by putting the heat from the laundry back into the system.
- This steam coming out of the system as a loss is used to heat the locker rooms.
- Rainwater in sports facilities is collected and used to irrigate the gardens of the facilities.
- Compost is obtained from dried branches and leaves and is used as fertilizer.

We inform our guests about waste batteries;



One small battery makes four square meters of land uncultivable. We do not throw away expired batteries. We deliver it to the authorized company for disposal in a way that will not harm the nature. Support the Sustainable Environment and don't throw the batteries away.

Eine kleine Batterie macht vier Quadratmeter Land unbebaubar. Wir werfen abgelaufene Batterien nicht weg. Wir liefern es an den autorisierten Betrieb zur umweltgerechten Entsorgung. Unterstützen Sie die nachhaltige Umwelt und werfen Sie die Batterien nicht weg.

Bir küçük kalem pil, dört metrekare toprağı üretim yapılamaz hale getiriyor. Ömrünü tamamlayan pilleri atmıyoruz. Doğaya zarar vermeyecek şekilde bertaraf edilmesi için yetkili firmaya teslim ediyoruz. Siz de Sürdürülebilir Çevre için destek olun ve pilleri çöpe atmayın.





emir
hotels

SUSTAINABILITY MANAGEMENT

PRACTICES

WORKING LIFE

OUR HUMAN RESOURCES APPROACH IN WORKING LIFE

At Emir Hotels, we see our most important resource as our employees. Issues such as performance evaluations of our employees, training and career management, safety of our employees, social and fringe benefits are our constant priority.

Our Recruitments

Recruitment in our businesses is made by adhering to the framework drawn by the Human Resources and Education departments. Our values such as making general talent assessments, being fair, not discriminating and being objective are the most important aspects in our recruitment.

Performance Evaluation and Fair Remuneration

The purpose of performance appraisals is to set aside a serious and quality time for our employees to talk with their managers about their strengths, discuss their suggestions for improvement and discuss their career planning, and it is a great opportunity. Performance evaluations are made every year, twice a year. Our employees are informed about their wages, working conditions, working hours, and when they will receive their wages before they start working at our facilities.

All personnel transactions of our employees from different countries or nationalities are followed by our Human Resources department in accordance with legal procedures, and equal opportunities are offered to all our employees within the hotel, regardless of their characteristics. Nationality, race, language, religion etc. not making any discrimination is one of the priorities of our working principles.





emir
hotels

SUSTAINABILITY MANAGEMENT
PRACTICES WORKING
LIFE

OUR HUMAN RESOURCES APPROACH IN WORKING LIFE

Our Education Mission

It is our mission to develop our colleagues to be competent in their jobs and to increase their

potential in order to contribute to the progress of our company.

Our hotel offers a well-planned development and reward system designed to enable employees to develop themselves, reach their highest potential and hold the key to a successful and fulfilling career in the hotel industry.

Basic Education Programs

Emir Hotels basic training programs that all employees must complete.

- Orientation Training
- Department On-the-Job Trainings
- Reinforcement Trainings
- Quality Systems Trainings

Protective/ Preventive Programs

- Fire, Health and Life Safety
- First Aid
- Emergency - Crisis Management
- Hygiene and Sanitation

Development Programs

They are supportive development programs prepared for needs.

- Trainer's Training
- Management and Leadership Training
- Personal Development Training
- Technical/Vocational Training
- Foreign Language Support





emir
hotels

PROFILE OF OUR EMPLOYEES Region and Province Map



While providing employee employment, we pay particular attention to the employment of local people.

Our local people and regional employee employment data are as follows;
Antalya Province by 17% 32% Mediterranean Region

SUSTAINABILITY MANAGEMENT
PRACTICES WORKING LIFE

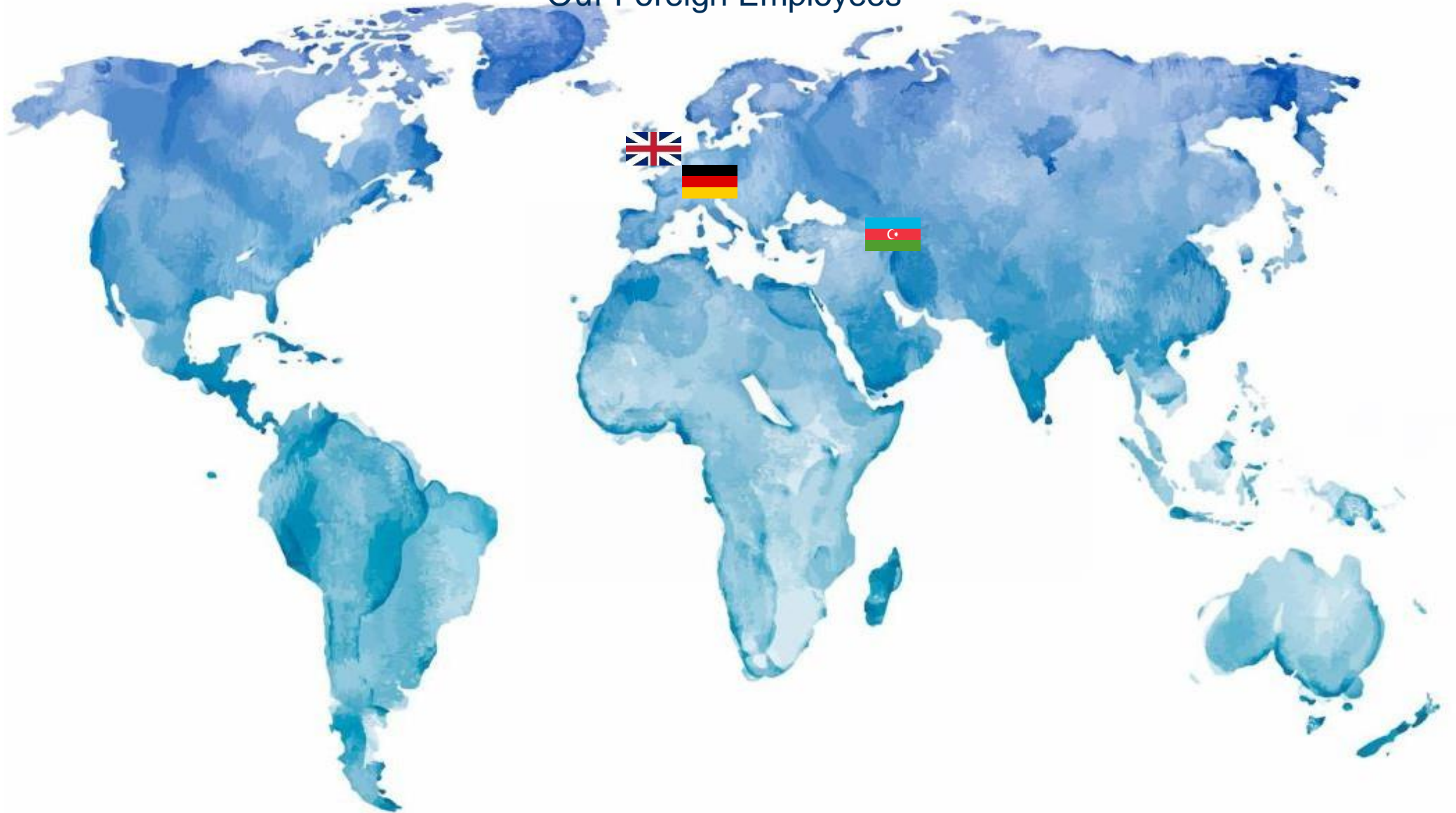


emir
hotels

**SUSTAINABILITY MANAGEMENT
PRACTICES WORKING LIFE**

PROFILE OF OUR EMPLOYEES

Our Foreign Employees



SPECIAL DAYS AND EVENTS

Employee of the Month and Motivation Party

At the end of each month, we determine the employee of the month and reward them with the award determined by the management that year at the motivation party we hold for the employees.

We consider the following issues when rewarding our employees;

- Compliance with work discipline,
- Communication,
- Performing above expectations,
- Efficient use of resources,
- High customer satisfaction,
- Smiling,
- Improvement and development studies.



SPECIAL DAYS AND EVENTS

Birthday Celebrations

We frequently plan and organize events in order to increase the motivation of all our employees and to keep the team spirit alive.

The birthday celebrations of our employees born in the same month are an example of these organizations.



SUSTAINABILITY MANAGEMENT
PRACTICES WORKING LIFE



emir
hotels

SUSTAINABILITY MANAGEMENT
PRACTICES WORKING LIFE

SPECIAL DAYS AND EVENTS

Mother's Day Greeting, Women's Day Celebration



WE BELIEVE THAT THE PRIMARY OBJECTIVE OF EDUCATION IS TO ACT, NOT TO KNOW

We inform our employees about all the steps we have taken or plan to take within the scope of sustainability and invite them to support our practices.

SUSTAINABILITY MANAGEMENT
PRACTICES WORKING LIFE



**Personal Hygiene and Food
Safety Trainings**



**Environment and Waste
Management
Trainings**

With our Emir Hotels Human Resources, Quality, Training and Development Team, we continue our training activities in order to train the best human resources in the sector and to make its development continuous. Our goal is to ensure that all the training programs we implement make a difference in the lives of our employees and turn them into corporate values. Examples of our trainings in this context;



First Aid Trainings



Hazardous Materials and Safety Trainings



Chemicals and Safe Use Trainings



We are constantly evaluating and improving ourselves on our behavioral standards, which is the result of Emir Hotels corporate identity. We believe that we have taken great strides in terms of the sustainability of our businesses by including all our employees in the Behavioral Standards program.

We are spreading training programs that will provide gains in many subjects such as correct and on-site communication, crisis-solving ability, personal development, and professional competence, and aim to ensure their continuity.



Behavioral Standards Training Program



emir
hotels

SUSTAINABILITY MANAGEMENT
PRACTICES WORKING LIFE



**Behavioral Standards Training
Program**



emir
hotels

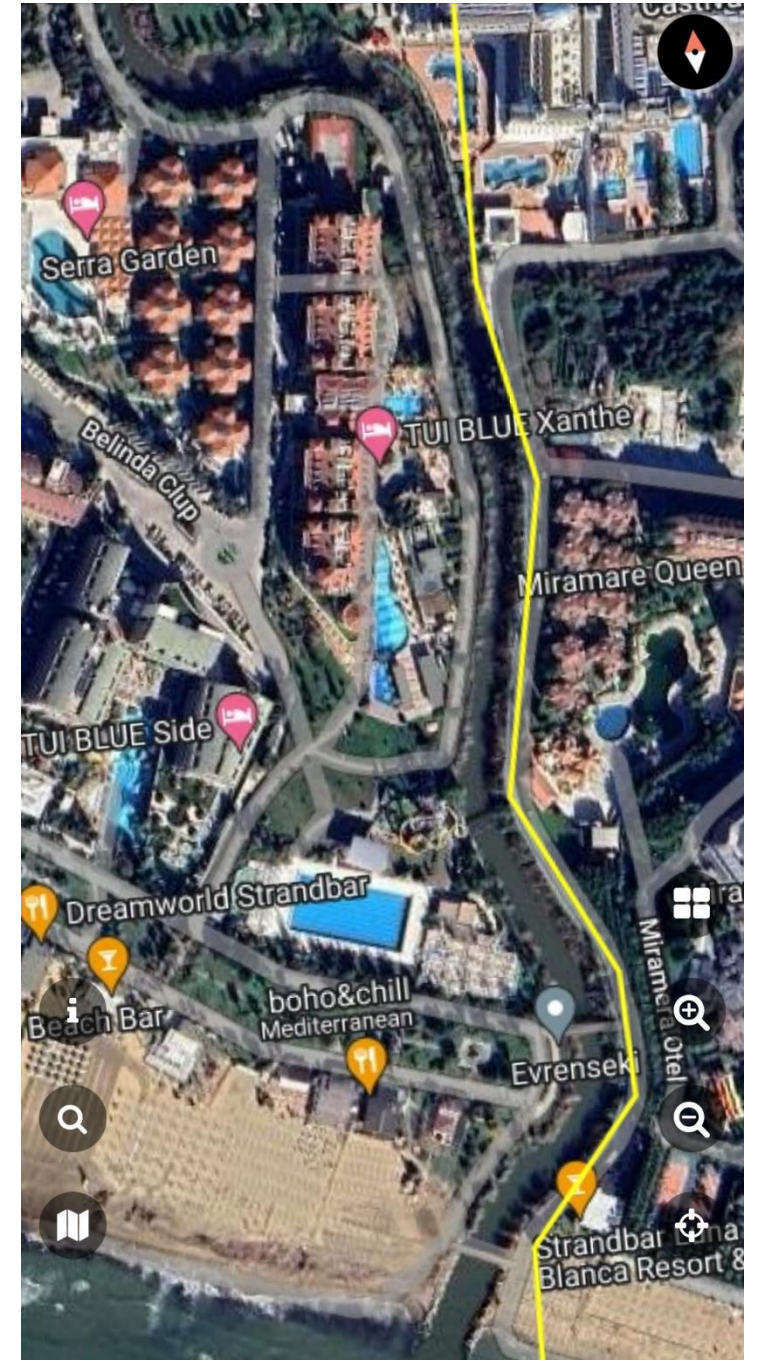
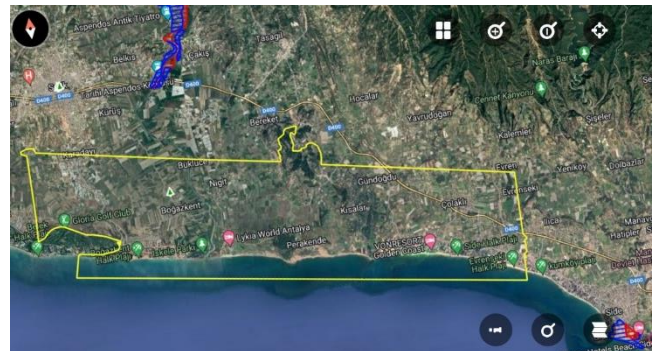
SUSTAINABILITY MANAGEMENT
PRACTICES WORKING LIFE



Every year, we hold meetings with different schools in different regions of Turkey. We are happy to accept students, whom we try to support for their professional development, as our interns and to travel together. By organizing orientation trainings, we convey our corporate identity, policies and activities to our intern students as the first thing.

NATURAL SITE AREAS;

They are areas that need to be protected above ground, underground or underwater, which belong to geological periods, prehistoric and historical periods and need to be protected in terms of their rarity or their features and beauties. Natural protected areas; It is divided into three categories as sensitive areas to be strictly protected, qualified natural protection areas and sustainable protection and controlled use areas. In the determination studies to be carried out in these areas, it is essential to obtain the opinions of the relevant institutions and organizations according to the characteristics of the area. Our business is within the borders of the natural protected area determined by the Ministry of Environment and Climate Change in Manavgat, Antalya. In this context, we declare that we have established a structure in accordance with the requirements of legislation protection, that we have the necessary permits, and that we are frequently subject to Ministry inspections.





emir
hotels

SUSTAINABILITY MANAGEMENT
PRACTICES WORKING LIFE



Child Safety and Rights Trainings

We determine and declare our institutional stance with our Child Rights Policy, we ensure the continuity of our awareness-raising trainings that cover all kinds of behavior that threatens the rights, safety and security of children, that we are against all kinds of physical, emotional and material exploitation, as well as the ways to be followed when such a situation is encountered.



emir
hotels

SUSTAINABILITY MANAGEMENT
PRACTICES SOCIAL WORKS

While 54 countries around the world have discriminatory laws against women, 'honor defense' is included in the penal codes of Peru, Bangladesh, Argentina, Ecuador, Egypt, Guatemala, Iran, Israel, Jordan, Syria, Lebanon and Venezuela.

80% of refugees are women.

Two-thirds of the more than 1 billion adults who are illiterate and do not have the right to education are women.

Although 1/3 of journalists are women, only 1% of section chiefs, editors or bosses are women.

1 out of every 3 women in the world is exposed to violence at some point in her life.

Women who have just graduated from university earn 20% less than men. This difference increases to 31% in 10 years.

70% of the 1.2 billion poor are women.

1 in 5 women will be a victim of abuse or attempted rape at some point in their life.



Women's Rights and Gender Equality Trainings The happiness of giving dreams to women who give life...

We support our female employees to raise awareness about their rights and ways to protect their rights, through the lawyers of the Antalya Bar Association Women's Rights and Gender Equality Board.



emir
hotels

SUSTAINABILITY MANAGEMENT
PRACTICES SOCIAL WORKS

HASTANE ASOS E-POSTA ÖĞR. E-POSTA EBYS AVES CBS INTERNATIONAL KÜTÜPHANE BİLGİ İŞLEM EDÜROBAM UZAKTAN EĞİTİM KALİTE

AKDENİZ ÜNİVERSİTESİ
"Eğitimde ve Bilimde Öncü Üniversite"

ANA SAYFA ÜNİVERSİTEMİZ AKADEMİK İDARI ÖĞRENCİ ARAŞTIRMA HIZLI ERİŞİM İLETİŞİM CANLI YAYIN ENG

Manavgat Meslek Yüksekokulu 'Dünya Gıda Günü Etkinliği'

Manavgat Meslek Yüksekokulu Gıda İşleme Bölümü olarak pandemi öncesinde planladığımız tüm etkinlikleri yeniden gerçekleştirilmeye devam ediyoruz. Bu bağlamda Okulumuz Gıda İşleme Bölümü, Trendy Group Hotels katkısıyla düzenlenen 16 Ekim Dünya Gıda Günü kapsamında ülkemizin alanında duayen olan saygıdeğer hocalarımız Süleyman Demirel Üniversitesi Gıda Mühendisliği Öğretim Üyeleri Sayın Prof. Dr. Aynur Gül KARAHAN ÇAKMAKÇI, Sayın Prof. Dr. Zübeyde ÖNER ile Burdur Mehmet Akif Ersoy Üniversitesi Burdur Gıda Tarım ve Hayvancılık Meslek Yüksekokulu Öğretim Üyesi Sayın Prof. Dr. Seval Sevgi KIRDAR, 17 Ekim 2022 Pazartesi günü, saat 10:45'te, Manavgat Meslek Yüksekokulu Hacı Nazmiye-Mehmet Tümbül İlica Uygulama Birimi Konferans Salonu'nda Dünya Gıda Günü ile ilgili Konferans vereceklerdir.

Etkinlik kapsamında Manavgat ve Antalya'da faaliyet gösteren ve gıda üretimi yapan firmalar ile temsilcilerinin stand açarak katılacağı çalıştayımıza tüm akademik ve idari personelimizi davetlidir.

DÜNYA GIDA GÜNÜ ETKİNLİĞİ

Manavgat M.Y.O.
Hacı Nazmiye-Mehmet Tümbül
İlica Eğitim ve Uygulama Birimi
17 Ekim 2022 10:45



AWARENESS ACTIVITIES ALSO ATTEND EMIR HOTELS

As part of the World Food Day event, we took our place in the workshop where food production companies and their representatives participated in Manavgat and Antalya.

At our stand, we conveyed our attitude towards food and waste by mentioning the scope of our businesses and the importance of the day to Vocational School students.

We are happy to introduce ourselves to our future colleagues





COVER THE OBSTACLES OF LIFE!

- Within the scope of the Plastic Cap Project, we collect plastic bottle caps in our businesses. We invite our guests and employees to support this project.
- We support the supply of manual or battery powered wheelchairs to those in need through the Turkish Spinal Cord Paralysis Association.

Examples of the ways we convey our goal of protecting natural resources to our guests and employees are;






USE ME AGAIN TOMORROW. JUST LIKE AT HOME.

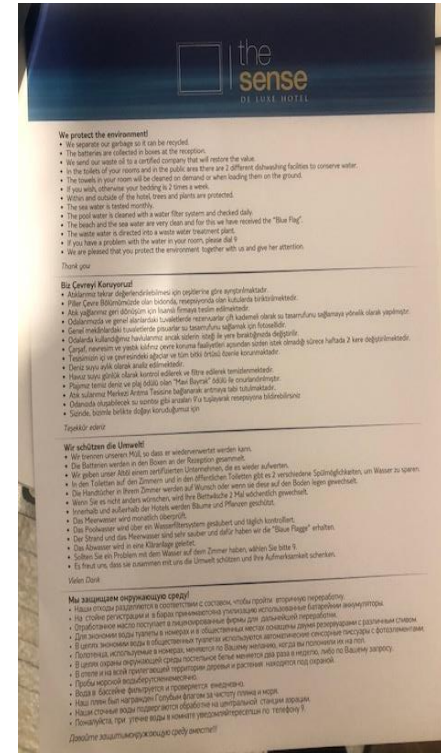
If you still want to have your towels replaced, please place them on the floor.

BENUTZEN SIE MICH MORGEN NOCHMAL. GENAU WIE ZU HAUSE.

Möchten Sie Ihre Handtücher dennoch ausgetauscht haben, legen Sie sie bitte auf den Boden.

HAVLULARINIZI YARIN TEKRAR KULLANIN. TIPKI EVDE OLDUĞU GİBİ.

Yine de havlularınızın değişmesini istiyorsanız, lütfen onları yere bırakınız.

the sense
DE LUXE HOTEL

We protect the environment

- We separate our garbage so it can be recycled.
- The bathroom are collected in boxes at the reception.
- We use our water till it is purified because that will restore the value.
- In the toilet of your rooms and in the public area there are 2 different discharging facilities to conserve water.
- The towels in your room will be changed or changed or when loading them on the ground.
- You wash, otherwise your bedding is 2 times a week.
- Wings and outside of the hotel, trees and plants are protected.
- The sea water is treated monthly.
- The pool water is cleaned with a water filter system and checked daily.
- The beach and the sea water are very clean and for this we have reserved the "Blue Flag".
- The waste water is directed into a waste water treatment plant.
- If you have a problem with the water in your room, please call it.
- We are pleased that you protect the environment together with us and give her attention.

Thank you

Wir schützen die Umwelt


- Wir trennen unseren Müll, so dass er wiederverwertet werden kann.
- Die Bäder werden in den Boxen an der Rezeption gesammelt.
- Wir geben unser Wasser bis zum letzten Tropfen an, da es wieder aufbereitet wird.
- In den Toiletten auf den Zimmern und in den öffentlichen Bereichen gibt es 2 verschiedene Spülungsanlagen, um Wasser zu sparen.
- Die Handtücher in Ihren Zimmern werden auf Wunsch oder wenn sie diese auf dem Boden liegen gewechselt.
- Wenn Sie es nicht ändern möchten, wird Ihre Bettwäsche 2 Mal wöchentlich gewechselt.
- Im Inn- und Außenbereich des Hotels werden Bäume und Pflanzen geschützt.
- Die Meeresküste wird monatlich gereinigt.
- Die Poolwasser wird mit einem Wasserfilter gereinigt und täglich kontrolliert.
- Die Strände und das Meerwasser sind sehr sauber und dafür haben wir die "Blue Flag" erhalten.
- Die Abwässer werden in eine Kläranlage geleitet.
- Sollten Sie ein Problem mit dem Wasser auf dem Zimmer haben, rufen Sie bitte 11.
- Es freut uns, dass Sie zusammen mit uns die Umwelt schützen und Ihre Aufmerksamkeit schenken.

Vielen Dank

Мы защищаем окружающую среду

- Наши отходы разделяются и сортируются с целью, чтобы можно было переработать.
- На отдыхе рестораны и в барах принимаются специальные меры по экономии воды.
- Общественные туалеты оборудованы специальными приборами для экономии воды.
- Для экономии воды туалетные комнаты и в общественных местах оснащены двумя разгрузочными системами.
- В отелях экономия воды обеспечивается путем использования автоматических систем смены постельного белья.
- Помещения, расположенные в парке, защищены от выжигания и повреждения.
- В отелях экономия воды обеспечивается с помощью системы очистки сточных вод.
- В отелях экономия воды обеспечивается с помощью системы очистки сточных вод.
- В отелях экономия воды обеспечивается с помощью системы очистки сточных вод.
- В отелях экономия воды обеспечивается с помощью системы очистки сточных вод.

Дорогие гости, пожалуйста, сообщите о проблеме!



THANK YOU, YOU MAKE THE DIFFERENCE

Upon your request we did not change your linens. Should you choose to have your linens changed tomorrow, please place this card on the bed.

Together we can reduce detergent use and save millions of liters of water.

VIELEN DANK, SIE MACHEN DEN UNTERSCHIED


Auf Ihre Anfrage haben wir Ihre Bettwäsche nicht gewechselt. Sollten Sie sich dafür entscheiden, dass Ihre Bettwäsche morgen gewechselt werden soll, legen Sie bitte die Karte auf das Bett.

Gemeinsam können wir die Waschmittelnutzung minimieren und Millionen von Litern Wasser sparen.

FARK YARATTIĞINIZ İÇİN TEŞEKKÜR EDERİZ

İstediğiniz üzerine nevresimlerinizi değiştirmedik. Nevresimlerinizi değiştirmenizi isterseniz, lütfen bu kartı yatağınızın üzerine bırakınız.

Birlikte deterjan kullanımını azaltarak milyonlarca litre suyu koruyabiliriz.



SUSTAINABILITY MANAGEMENT PRACTICES SOCIAL WORKS

We convey to our guests how effective they can be in our effort to protect natural resources, leaving it to their preferences, and we invite our guests to support this cause.



emir
hotels

SUSTAINABILITY MANAGEMENT
PRACTICES SOCIAL
WORKS



THE PURPOSE IS TO INSPIRE CHILDREN WITH A LOVE OF TREE AND NATURE

We plant saplings with our child guests at regular intervals. We know that our future is in their hands.



emir
hotels

SUSTAINABILITY MANAGEMENT
PRACTICES SOCIAL
WORKS



At regular intervals, we show the importance we attach to the protection and cleaning of the environment and our sense of responsibility in this regard with environmental cleaning activities by inviting our guests.



BİLGİ AKTARMA	TO:	Tüm Departmanlar		
	FROM:	Kalite Müdürü	DATE:	06.10.2022
	SUBJECT:	Çevre Etkinliği		
	For Info:	Sn. Uğur ÖZGÜR Sn. Uluç Ali YENERLER	TOTAL NO.OF PAGES:	1
	CC:	Yönetim Kurulu		

06.10.2022 tarihi Perşembe günü saat 15.30'da başlayan çevre etkinliği kapsamlı çevre temizliği sırasında;

plastik atık, kağıt atık, metal atık, cam atık, organik atık ve geri dönüşümsüz atık türlerinde atık toplanmıştır.

Atık alanında toplanan atık türlerinden her biri için ayrı alan bulunmaktadır. Toplanan atık miktarları aynı günün atık tartım formuna kaydedilmiştir.

Katılım sağlayan departmanlara desteklerinden dolayı teşekkür eder, iyi çalışmalar dilerim.

Saygılarımla.



As an ecosystem, forests provide many services to nature and people. These services consist of many services such as providing habitat, oxygen production, water production, soil protection, biodiversity, carbon storage, nutrient cycling, wood production, air purification, recreation and education under the name of forest ecosystem services.

We declare that we have made our regular target the support we give to the afforestation projects carried out by the TEMA Foundation.

As an example of the support we give to afforestation projects;





emir
hotels

SUSTAINABILITY MANAGEMENT
PRACTICES SOCIAL
WORKS



EMIR HOTELS AT THE EMPLOYMENT FAIR

We took our place in the Employment Fair held in the Manavgat Region with the participation of students and the people of the region. We conveyed the scope of our businesses to the students and the people of the region and held interviews. We are in the responsibility and happiness of the place we have acquired in regional employment.



emir
hotels

SUSTAINABILITY MANAGEMENT
PRACTICES SOCIAL
WORKS



We attach importance to communication in management. For our management team and their assistants, we are constantly organizing our motivational organizations with strong and accurate communication.



INTRODUCTION TO TANGIBLE AND INTANGIBLE CULTURAL HERITAGE

With this report, we provide information on the natural history, touristic and archaeological riches of the region we are in, traditions and customs, the people of the region and the peculiarities of the region, excursions that can be made in the vicinity, sports and cultural activities, transportation, in areas accessible to our guests and on our website.



SIDE ANCIENT THEATER, APOLLO TEMPLE
SIDE ALTES THEATER, APOLLO-TEMPEL
SIDE ANTİK TIYATROSU, APOLLON TAPINAGI



If you ask, "Which is the most precious jewel among the treasures in Side Ancient City?", our answer will be the Ancient Theater, located right in the center. It is considered the only example in Anatolia with its unique architecture. Antalya Side Theater is located in the narrow part of the peninsula where the city is located. The building is in the form of the Hellenistic tradition overflowing from a semi-circle in terms of plan, but has the characteristics of Roman architecture in terms of construction technique. With this unique feature, Side Antique Theater is one of the most original structures in this geography. Side Antique Theater, whose decorations show the baroque characteristics of the Antonine Period, bears the traces of the architecture that started with the Pompeius Theater in Rome. Especially do not miss the temples of Apollo and Athena, even try to catch the sunset if possible. While you are enchanted by the most romantic view of the Mediterranean, do not forget to lift your head and look at the Medusa reliefs on the temple.

How to go:
Antalya's Manavgat District can be reached directly by intercity buses departing from different points of Turkey. After arriving in Manavgat, it can be reached by Side buses.

Wenn Sie fragen: „Welches ist das wertvollste Juwel unter den Schätzen der antiken Stadt Side?“, wird unsere Antwort das antike Theater sein, das sich direkt im Zentrum befindet. Es gilt als das einzige Beispiel in Anatolien mit seiner einzigartigen Architektur. Das Antalya Side Theatre befindet sich im schmalen Teil der Halbinsel, auf der sich die Stadt befindet. Das Gebäude steht in der Form der hellenistischen Tradition, die im Grundriss aus einem Halbkreis hervortritt, weist jedoch in der Bautechnik Merkmale der römischen Architektur auf. Mit diesem einzigartigen Merkmal ist das Side Antique Theatre eines der originalsten Bauwerke in dieser Geographie. Das Side Antique Theatre, dessen Dekorationen die barocken Merkmale der Antoninischen Zeit zeigen, trägt die Spuren der Architektur, die mit dem Pompeius-Theater in Rom begann. Verpassen Sie vor allem nicht die Tempel von Apollo und Athena, versuchen Sie sogar, wenn möglich, den Sonnenuntergang einzufangen. Während Sie vom romantischsten Blick auf das Mittelmeer verzaubert werden, vergessen Sie nicht, den Kopf zu heben und die Medusa-Reliefs am Tempel zu betrachten.

Anfahrt:
Der Bezirk Manavgat in Antalya kann direkt mit Überlandbussen erreicht werden, die von verschiedenen Orten in der Türkei abfahren. Nach der Ankunft in Manavgat kann es mit Side-Bussen erreicht werden.

"Side Antik Kentindeki hazineler arasındaki en kıymetli mücevher hangisi" diye sorarsanız yanıtımız tam merkezde yer alan Antik Tiyatro olur. Kendine özgü mimarisıyla Anadolu'daki tek örnek sayılıyor. Antalya Side Tiyatrosu, kentin yer aldığı yarımadanın daralacağı kesimde bulunuyor. Yapı, plan açısından Helenistik geleneğin yarım daireden taşan biçiminde, ancak inşa tekniği açısından Roma mimarisi özelliklerini taşıyor. Side Antik Tiyatro'su bu eşsiz özelliğiyle bu coğrafyadaki en özgün yapılardan birisidir. Süzlemelerinde Antoninler Dönemi barok özelliği görülen Side Antik Tiyatrosu, Roma'daki Pompeius Tiyatrosu ile başlayan mimarisinin izlenini taşıyor. Özellikle Apollon ve Athena tapınaklarını kaçırmayın, hatta mümkünse gün batımını yakalamaya çalışın. Akdenizin en romantik manzarası karşısında büyülenirken, başınızı kaldırıp tapınak üzerindeki Medusa kabartmalarına bakmayı unutmayın.

Nasıl Gidilir:
Antalya'nın Manavgat ilçesi'ne Türkiye'nin farklı noktalarından kalkan şehirlerarası otobüslerle doğrudan ulaşılabilir. Manavgat'a geldikten sonra ise Side otobüsleri ile ulaşılabilir.

PIYAZ
ANTALYA PIYAZI



In the Antalya region, piyaz, it is a food made from boiled dried beans, onions, parsley, tomatoes, boiled eggs, tahini, chili peppers, olive oil and vinegar. Consumed as an appetizer in other regions of Turkey, piyaz is a registered dish in the Antalya region as a geographically indicated product and shows some differences in terms of its preparation.

In der Region Antalya Piyaz; Es ist ein Lebensmittel aus gekochten getrockneten Bohnen, Zwiebeln, Petersilie, Tomaten, gekochten Eiern, Tahini, Chilisoten, Olivenöl und Essig. In anderen Regionen der Türkei als Vorspeise konsumiert, ist Piyaz ein registriertes Gericht in der Region Antalya als geografisch gekennzeichnetes Produkt und weist einige Unterschiede in Bezug auf seine Zubereitung auf.

Antalya yöresinde piyaz; haşlanmış kuru fasulye, soğan, maydanoz, domates, haşlanmış yumurta, tahin, pul biber, zeytinyağı ve sirkeden yapılan bir yiyecektir. Türkiye'nin diğer bölgelerinde bir meze olarak tüketilen piyaz, Antalya yöresinde coğrafi işaretli ürün olarak tescil edilmiş bir yerektir ve yapılışı itibarıyla da bazı farklılıklar gösterir.

ALAFARADIN KILIM WEAVING
ALAFARADIN TEPPICHE WEBEN
ALAFARADIN KILIM DOKUMACILIĞI



The rugs of Alafarad are a kind of weaving with kirkit, which is woven in the Küçükköy and Büyükköy neighborhoods of the Korkuteli district of Antalya province and its surroundings. Natural dyes are used in the production of these weavings, the warp and weft of which are made of sheep's wool. The main colors of Alafarad's rugs woven by women on wooden looms called "Istar" are green, red, black and blue.

Die Teppiche von Alafarad sind eine Art Weben mit Kirkit, das in den Stadtteilen Küçükköy und Büyükköy des Bezirkes Korkuteli in der Provinz Antalya und Umgebung gewebt wird. Bei der Herstellung dieser Webstoffe, deren Kette und Schuss aus Schafwolle bestehen, werden natürliche Farbstoffe verwendet. Die Hauptfarben von Alafarads Teppichen, die von Frauen auf hölzernen Webstühlen namens „Istar“ gewebt werden, sind Grün, Rot, Schwarz und Blau.

Alafaradın kilimleri, Antalya ili Korkuteli ilçesi Küçükköy ve Büyükköy Mahallesi ile çevresinde dokunan bir tür kirkitli dokumadır. Atkısı ve çözgüsü koyun yününden imal edilen bu dokumaların yapımında, doğal boyalar kullanılmaktadır. "Istar" adı verilen ahşap tezgâhlarda, kadınlar tarafından dokunan Alafaradın kilimlerinin ana renkleri yeşil, kırmızı, siyah ve mavirdir.

TRANSPORT INFORMATION

It is possible to reach every part of Turkey by buses from Manavgat Bus Station. City and intercity transportation is very easy in Manavgat. You can reach your desired destination economically by public transportation without having to worry about a vehicle and without waiting too long.

SIDE

Transportation from Manavgat to Side is provided by minibuses departing every 15 minutes. The distance between Manavgat and Side is 7 km and takes approximately 20 minutes. You can reach Side center after a short 3-minute journey by trams that depart from Side bus station every 5 minutes.

KUMKOY

Transportation from Manavgat to Kumköy is provided by minibuses departing every 20 minutes. The distance between Manavgat and Kumköy is 18 km and takes approximately 35 minutes.

TITREYENGOL

Transportation from Manavgat to Titreyengöl is provided by minibuses departing every 10 minutes. The distance between Manavgat and Titreyengöl is 12 km. and its destination is Sorgun, Çamlık, Hotels, Sorgun Public Beach and Titreyengöl. It takes approximately 35 minutes.

GUNDOGDU

Transportation from Manavgat to Gündoğdu is provided by minibuses departing every 20 minutes. The distance between Manavgat and Gündoğdu is 19 km and takes approximately 30 minutes.

COLAKLI

Transportation from Manavgat to Çolaklı is provided by minibuses departing every 20 minutes. The distance between Manavgat and Çolaklı is 15 km and takes approximately 25 minutes.

EVRENSEKI

Transportation from Manavgat to Evrenseki is provided by minibuses departing every 20 minutes. The distance between Manavgat and Evrenseki is 13 km and takes approximately 20 minutes.

MANAVGAT WATERFALL

Transportation from Manavgat to the Waterfall is provided by minibuses departing every 15 minutes. The distance between Manavgat and Waterfall is 8 km and takes approximately 10 minutes.

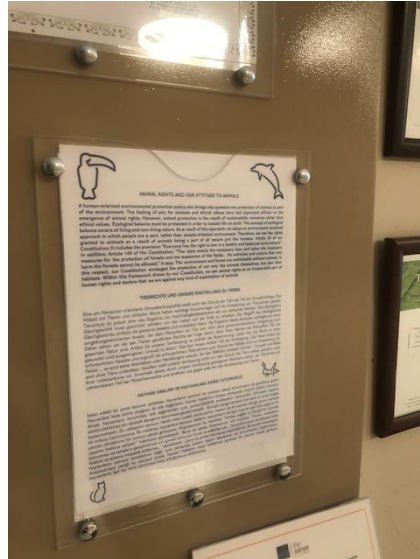
ALANYA

Transportation from Manavgat to Alanya is provided by minibuses and buses departing every 20 minutes. The distance between



emir
hotels

It is to inform our guests of our attitude
towards animal
rights;



SUSTAINABILITY MANAGEMENT
PRACTICES SOCIAL WORKS



ANIMAL RIGHTS AND OUR ATTITUDE TO ANIMALS

A human-oriented environmental protection policy also brings into question the protection of animals as part of the environment. The feeling of pity for animals and ethical values have had important effects on the emergence of animal rights. However, animal protection is the result of sustainability concerns rather than ethical values. Ecological balance must be protected in order to sustain life on earth. The concept of ecological balance covers all living and non-living nature. As a result of this approach, we adopt an environment-centered approach in which people are a part, rather than people-oriented environment. Therefore, we see the rights granted to animals as a result of animals being a part of all nature just like humans. Article 56 of our Constitution; It includes the provision "Everyone has the right to live in a healthy and balanced environment". In addition, Article 169 of the Constitution; "The state enacts the necessary laws and takes the necessary measures for the protection of forests and the expansion of the fields... No activities and actions that may harm the forests cannot be allowed," it says. The environment and forest are unthinkable without animals. In this respect, our Constitution envisaged the protection of not only the animals themselves, but also their habitats. Within this framework drawn by our Constitution, we see animal rights as an inseparable part of human rights and declare that we are against any kind of exploitation of animals.

TIERRECHTE UND UNSERE EINSTELLUNG ZU TIEREN

Eine am Menschen orientierte Umweltschutzpolitik stellt auch den Schutz der Tiere als Teil der Umwelt infrage. Das Mitleid mit Tieren und ethische Werte haben wichtige Auswirkungen auf die Entstehung von Tierrechten gehabt. Tierschutz ist jedoch eher das Ergebnis von Nachhaltigkeitsbedenken als von ethischen Werten. Das ökologische Gleichgewicht muss geschützt werden, um das Leben auf der Erde zu erhalten. Der Begriff des ökologischen Gleichgewichts umfasst die gesamte belebte und unbelebte Natur. Als Ergebnis dieses Ansatzes verfolgen wir einen umgebungszentrierten Ansatz, bei dem Menschen ein Teil und nicht eine personenorientierte Umgebung sind. Daher sehen wir die den Tieren gewährten Rechte als Folge davon, dass Tiere ebenso wie Menschen Teil der gesamten Natur sind. Artikel 56 unserer Verfassung; es enthält die Bestimmung „Jeder hat das Recht, in einer gesunden und ausgewogenen Umwelt zu leben“. Darüber hinaus Artikel 169 der Verfassung; „Der Staat erlässt die erforderlichen Gesetze und ergreift die erforderlichen Maßnahmen zum Schutz der Wälder und zur Ausweitung der Felder ... es sind keine Aktivitäten oder Handlungen erlaubt, die den Wäldern schaden können.“ Umwelt und Wald sind ohne Tiere undenkbar. Insofern sieht unsere Verfassung nicht nur den Schutz der Tiere selbst, sondern auch ihrer Lebensräume vor. Innerhalb dieses durch unsere Verfassung gezogenen Rahmens sehen wir Tierrechte als untrennbaren Teil der Menschenrechte und erklären uns gegen jede Art der Ausbeutung von Tieren.

HAYVAN HAKLARI VE HAYVANLARA KARŞI TUTUMUMUZ

İnsan odaklı bir çevre koruma politikası, hayvanların çevrenin bir parçası olarak korunmasını da gündeme getirir. Hayvanlara karşı acıma duygusu ile etik değerlerin, hayvan haklarının ortaya çıkmasında önemli etkileri olmuştur. Ancak, hayvanların korunması etik değerlerden çok, sürdürülebilirlik endişesinin sonucudur. Dünyada yaşamın sürdürülebilirliği için ekolojik dengenin korunması gerekmektedir. Ekolojik denge kavramı, tüm canlı ve cansız doğayı kapsamaktadır. Bu yaklaşımın sonucu olarak insan odaklı çevre yerine, insanın da bir parçası olduğu çevre merkezli bir anlayış benimsiyoruz. Bu nedenle, hayvanlara tanınan hakların, hayvanların da tıpkı insanlar gibi tüm doğanın bir parçası olmalarının bir sonucu olarak görüyoruz. Anayasamızın 56. maddesi; "Herkes, sağlıklı ve dengeli bir çevrede yaşama hakkına sahiptir" hükmünün içermektedir. Buna ek olarak, Anayasa'nın 169. maddesi; "Devlet, ormanların korunması ve sahalarının genişletilmesi için gerekli kanunları koyar ve tedbirleri alır... Ormanlara zarar verebilecek hiçbir faaliyet ve eyleme müsaade edilemez..." demektir. Çevre ve orman hayvansız düşünülemez. Bu açıdan Anayasamız hayvanların yalnızca kendilerinin değil, aynı zamanda onların yaşam alanlarının da korunmasını öngörmüştür. Anayasamızın çizdiği bu çerçeve içinde, hayvan haklarını insan haklarının ayrılmaz bir parçası olarak görüyor, hayvanlarla ilgili her türlü sömürüye karşı olduğumuzu bildiriyoruz.



SPECIAL AND THEMATIC DAYS AND REMINDERS

World Environment Day
World No to Violence
Day World Habitat Day
Animal Protection Day
International Day of the Girl Child
International Women's Farmers
Day World Savings Day
National Afforestation Day
World Children's Rights
Day
International Day of Persons
with Disabilities
Women's Rights Day
World Human Rights
Day World Animal Rights
Day world Water Day
World Cleaning Day..

We share with posters, visuals and social media in order to inform our employees and guests on special and thematic days, to encourage their participation in organizations and to make necessary reminders.





emir
hotels

SUSTAINABILITY MANAGEMENT
PRACTICES SOCIAL
WORKS



It is our greatest happiness to support all the activities that students do or want to do within the scope of social responsibilities.

As Emir Hotels Social Club team, we participated in the bazaar held by the students and teachers of Manavgat Anatolian High School in the school garden and provided food support.

SUSTAINABILITY MANAGEMENT
PRACTICES SOCIAL
WORKS



P L A N T S



emir
hotels

THE POWER OF SOLIDARITY

We provide Ramadan voucher support to our hotel employees in the month of Ramadan every year. Because we believe in the power of solidarity, which is our greatest cultural heritage.

We provide stationery support for the student children of our employees, from primary school to undergraduate, regardless of their education level, every year before the academic year.

We see education as the most important investment in the future of society and people. We provide scholarship opportunities to the student children of our employees under the specified conditions throughout the academic year.

SUSTAINABILITY MANAGEMENT
PRACTICES SOCIAL
WORKS



We host children with special learning needs during school periods, and we build parks, whitewash, etc. for the schools in need around us.

Waste food is collected by sorting the food that the animals will consume, kept in cold rooms and sent to Manavgat Municipality Animal Shelter three times a week. A plaque was received from the Municipality on World Animal Protection Day.

The cats sheltered in our cat houses are cared for. We buy cat food with donations from our guests through donation boxes and put our food into containers three times a day.

In cooperation with the Manavgat Tema Foundation, we hosted students from local public schools in our hotel and created nature and environmental awareness among our children within the scope of the tree planting event in our garden - Our Support A certificate of appreciation was given by Tema for.

During World Animal Protection Week, managers and staff visited the Manavgat Municipality Animal Shelter and donated food and cat litter.



OUR LOCAL SUPPLIERS

We contribute to the commercial volume of the region.

We take care to work with suppliers located in nearby areas. The volume of guests and employees of our hotels creates human potential in a context for the region we are in and increases the population of the region.

Our goal of minimizing the CO² emissions of our supplier companies' delivery vehicles and reducing the impact on the environment is another reason for our desire to work with local suppliers in the region.

The data of our regional supply chain is as follows;

**Antalya Province with a rate of
57,3% 61,5% Mediterranean
Region**

We evaluate our suppliers as a necessity of our supply management. In our supplier selections, which we include in our system with our purchasing specification; We accept the criteria of complying with legal regulations,

ISO 22000 Food Safety Management System certificate for our food suppliers as reasons for preference.



OUR COMMUNICATIONS WITH OUR STAKEHOLDERS

with our employees

One-on-one meetings, group meetings, trainings, workshops, performance evaluations, career development meetings, annual reports

with our guests

One-on-one interviews, surveys, social media

with our suppliers

One-on-one meetings, purchasing specifications, supplier evaluations, meetings

with local communities

Social projects, annual reports, meetings, social media

with public institutions

Meetings, annual reports with universities and academics

Intern program, conference-meeting attendance, scholarships



With hotel unions, municipalities, regional headmen, official authorities,
through our management team and designated representatives;

Studies for the promotion of the region,
Protection of local resources and opportunities,
Assistance in the region,
Solving important problems that will affect the region,
Preservation of historical and cultural assets,
We are working together to increase local awareness.

